

Connecting Your Hydrawise Flow Meter

Thank you for purchasing a Hydrawise flow meter.

There are a few simple rules to follow to ensure that your flow meter will give faultless service.

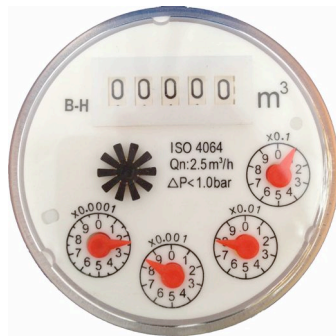
On the rear of this page you will find a Hydrawise connection diagram and further helpful information is available online at <http://hydrawise.com/support>.

Contents

The flow meter consists of 2 parts –

1 Flow meter body

The flow meter body contains an analog dial for manual readings as follows –



Dial Marking	Measurement Unit
X0.001	1 Litre
X0.01	10 Litres
X0.1	100 Litres
m ³	Kilolitres

Your flow meter will have 3 wires protruding from the flow meter's body.

The wires need to be connected to the Sensor inputs on the controller for remote measurement.

In all models only 2 wires are used.

2 Adapter

Each flow meter has an optional adapter to allow connection to smaller diameter pipes.

Model	Body Thread	Adapter Thread
1"	1" (25mm)	¾" (20mm)
1¼"	1¼" (32mm)	1" (25mm)

Planning

Planning is an important step in the successful installation of your Hydrawise flow meter and the reliable operation of your irrigation system.

1 Flow meter location

Flow meters are installed between the water supply and the master valve. To avoid false alerts, there should be no water taps or other uncontrolled water use on the downstream side of the flow meter.

Where all the solenoids connected to the controller are not grouped together, it may be necessary to install more than one flow meter.

Where the flow meter is installed, do not have 90 degree bends within approximately 12 inches (300mm) either side of flow meter.

2 Cable

Two wire cable will be required.

The gauge of flow meter cable will be determined by the total length of cable between the controller and the flow meter. The general rule here is 0.5mm (24GA) wire is good for a run of up to 240 feet (80 metres).

Installing

The following instructions assume you have already installed your Hydrawise controller.

1 Flow meter body

The flow meter has a marking on the body indicating direction of water flow.

Installation of the flow meter must be in the correct orientation with water flowing in the direction of the arrow on the flow meter body.

2 Connect flow meter wire

Hydrawise strongly recommends that all flow meter connections be soldered and sealed against moisture for reliable, long term operation.

Connect the wires as follows to your Hydrawise controller –

Wire Color	Sensor Terminal Block
White	0V
Blue	Sensor 1, 2, 3 or 4
Red	Not used

Configuration

Configuration of your flow meter is completed using your Hydrawise account.

1 Log into your account

2 Create a Flow Sensor

3 Assign Zones to the Flow Sensor

HydraWise Controller Connection Diagram

